

# *Unified Global Security: The Challenge Ahead*





# Conveyance Inspection Procedures and Sealing Process

Presented by  
SSCSS Mark Isaacson  
SCSS Tom Greulich  
SCSS Mark Mahoney

---

*Unified Global Security: The Challenge Ahead*



# C-TPAT Criteria...

## Container Security (Importer):

- Container integrity must be maintained to protect against the introduction of unauthorized material and/or persons.
- At point of stuffing, procedures must be in place to properly seal and maintain the integrity of the shipping containers.
- A high security seal must be affixed to all loaded containers bound for the U.S.
- All seals must meet or exceed the current ISO/PAS 17712 standards for “High Security” seals.



---

*Unified Global Security: The Challenge Ahead*

# C-TPAT Criteria...

## Container Security (Highway Carrier):

- When transporting a container or trailer for a C-TPAT importer, a high security seal that meets or exceeds the current ISO PAS 17712 standards for high security seals must be utilized.

## Trailer Seals (Highway Carrier):

- The sealing of trailers, to include continuous seal integrity, are crucial elements of a secure supply chain, and remains a critical part of a carrier's commitment to C-TPAT.
- A high security seal must be affixed to all loaded trailers bound for the U.S. All seals must meet or exceed the current ISO PAS 17712 standards for high security seals.



*Unified Global Security: The Challenge Ahead*

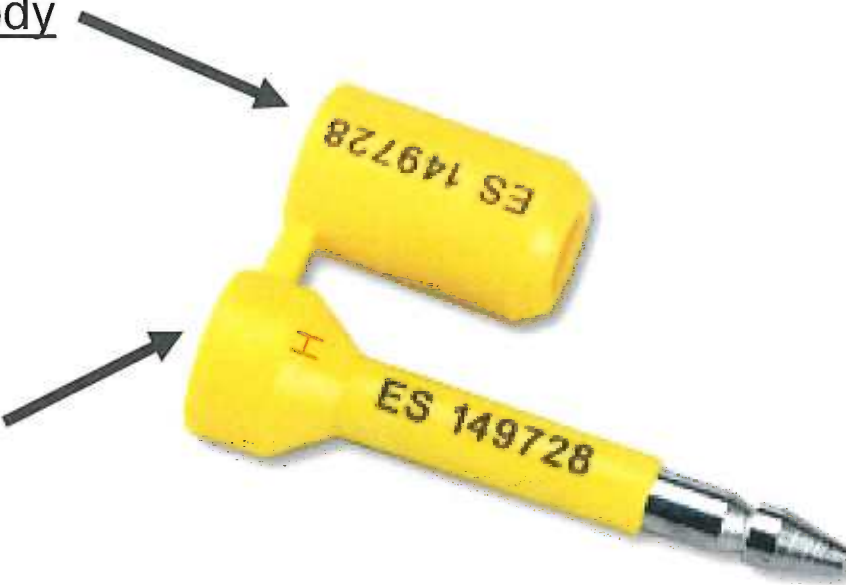


# How Do You Know?

- Look for the “H” stamped on the seal:

Bottom of the locking body

Top of the steel bolt or rod



---

*Unified Global Security: The Challenge Ahead*

# C-TPAT Criteria...

- Seal Affixing Process:
  - Only designated, authorized employees must distribute and affix container seals for integrity purposes. The fewer people who have access to seals, the better!
  - Unauthorized employees must never handle seals!

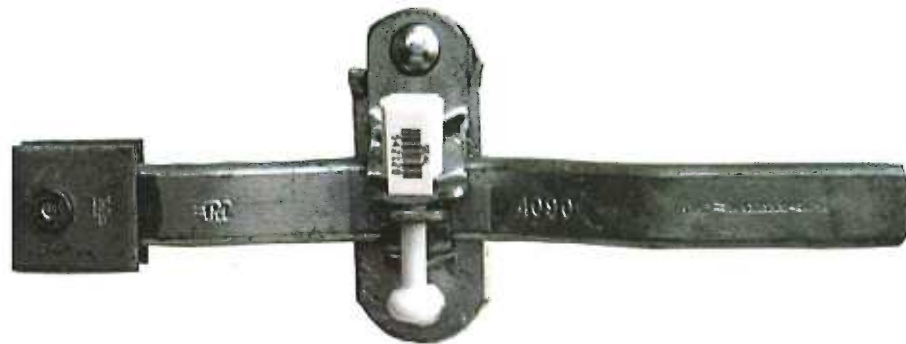


---

*Unified Global Security: The Challenge Ahead*

# Container/ Trailer Seals...

- Seal Affixing Process:
  - Seals should be affixed to the right door of the container/ trailer on the hasp that has the welded rivet. This practice will raise the level of security for the shipment.
  - After the seal is affixed to the container, an authorized employee should make sure that the seal is secure by pulling down on it.



---

*Unified Global Security: The Challenge Ahead*

# Container/ Trailer Seals...

Affix  
Seal

Outside Doors:



Detachable or loose bolts can allow access inside container

---

*Unified Global Security: The Challenge Ahead*





# Container/ Trailer Seals...

Affix  
Seal



---

*Unified Global Security: The Challenge Ahead*



# Container/ Trailer Seals...

Affix  
Seal



Detachable or loose bolts can allow access inside container



*Unified Global Security: The Challenge Ahead*



# Container/ Trailer Seals...

Affix  
Seal

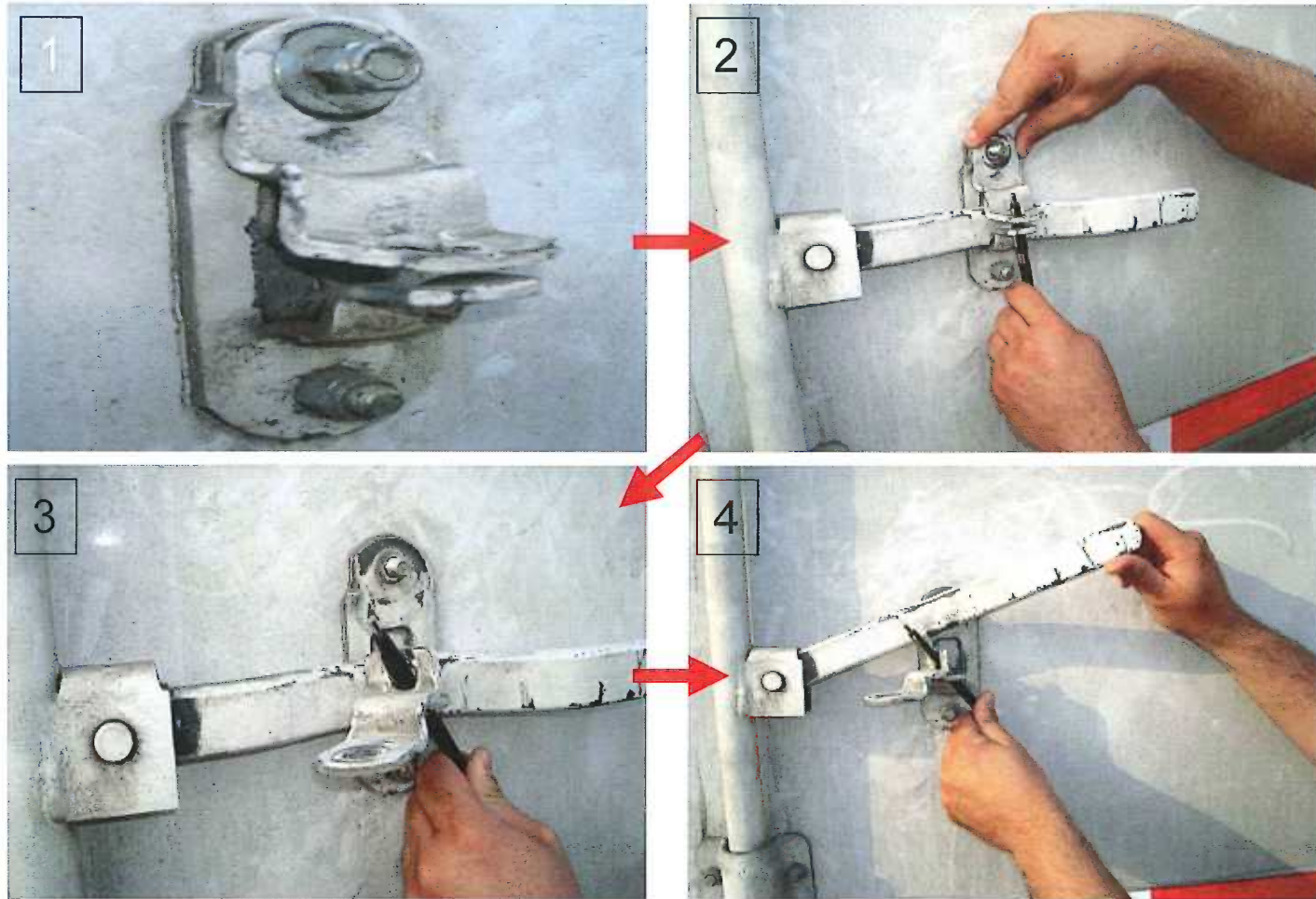


*Unified Global Security: The Challenge Ahead*



# Container/ Trailer Seals...

Affix Seal



*Unified Global Security: The Challenge Ahead*



# Seal Inspection

Seal Verification and Inspection Process:

**V V T T**

**V** - View seal & container locking hardware

**V** - Verify seal number

**T** - Tug on seal to make sure it's on right

**T** - Twist & turn seal to make sure it doesn't unscrew

---

*Unified Global Security: The Challenge Ahead*

