

# Container Inspection...

## 7-Point Container Inspection Process:

1. Outside/ Undercarriage (before entering facility)
2. Inside/ Outside doors
3. Right side
4. Left Side
5. Front Wall
6. Ceiling/Roof
7. Floor (Inside)



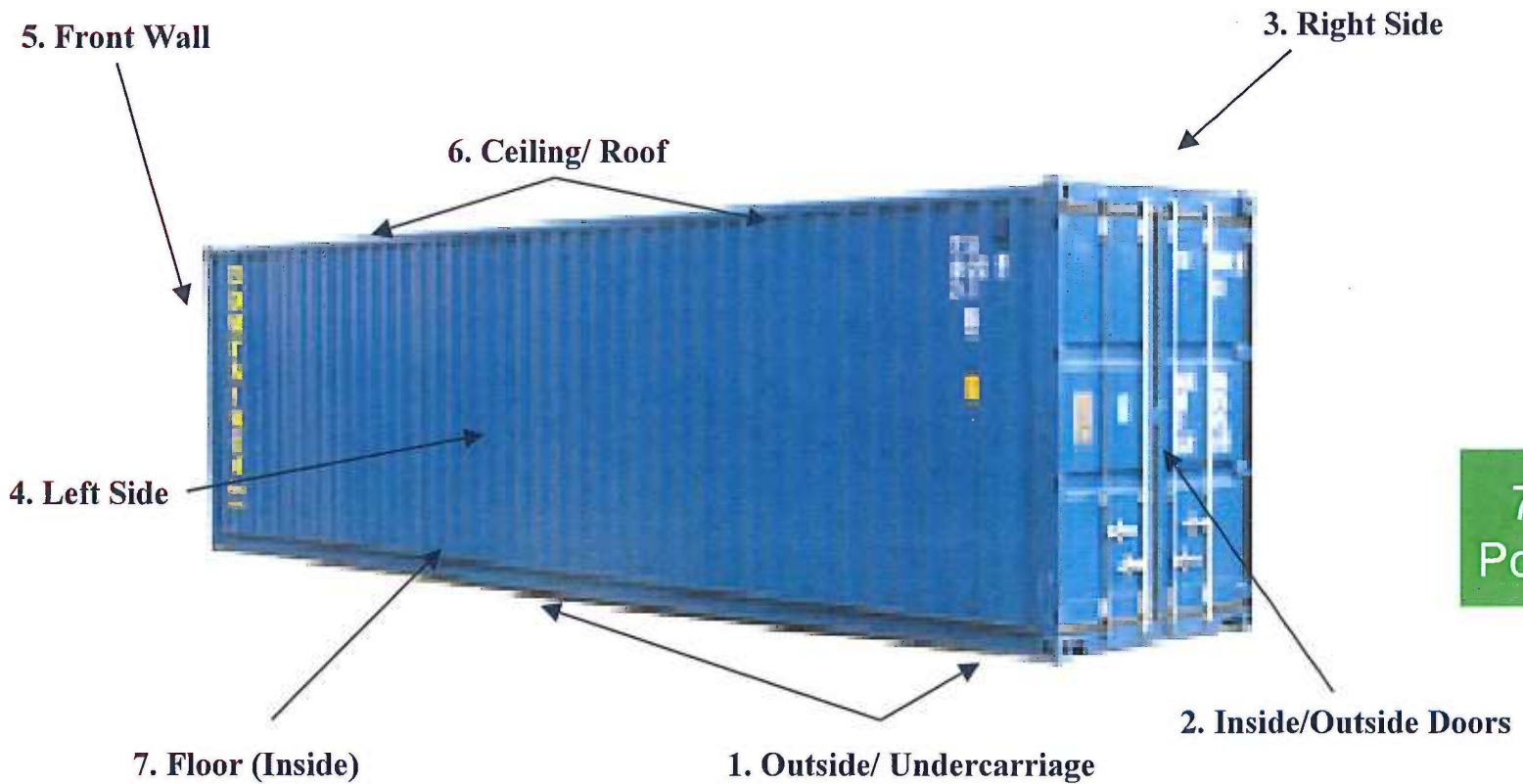
7  
Point



Supply Chain Security in a New Business Environment



## 7-Point Container Inspection



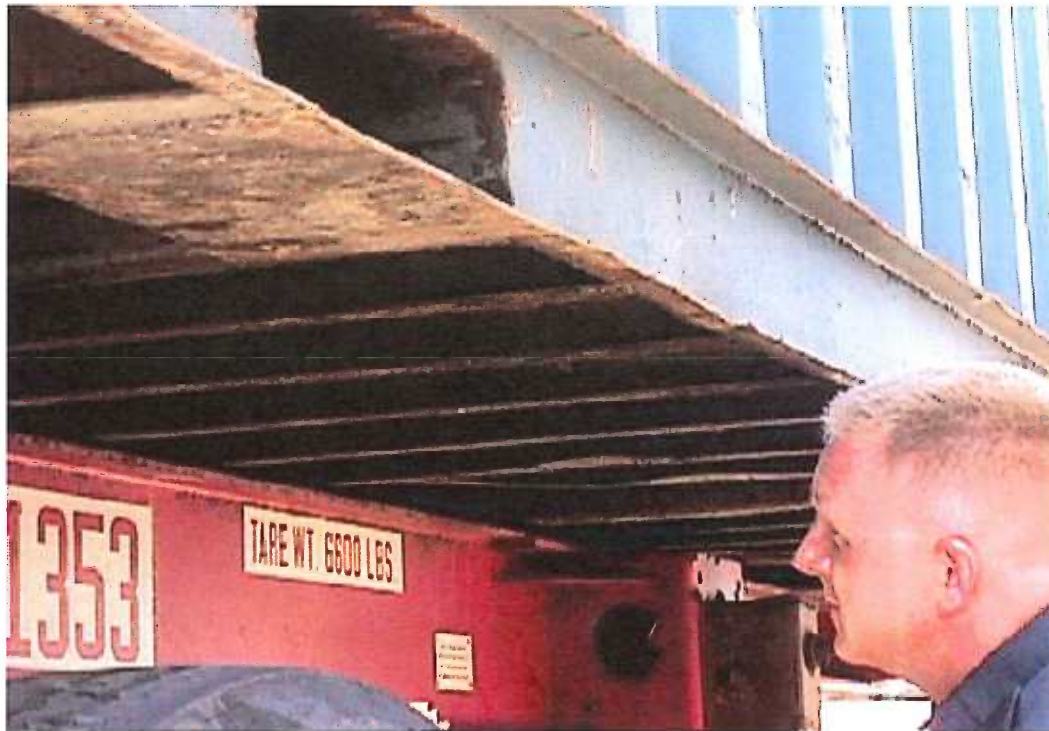
Supply Chain Security in a New Business Environment



# 7-Point Container Inspection...

## 1. Undercarriage:

- Inspect prior to entering facility
- Support beams should be visible



7  
Point  
Under

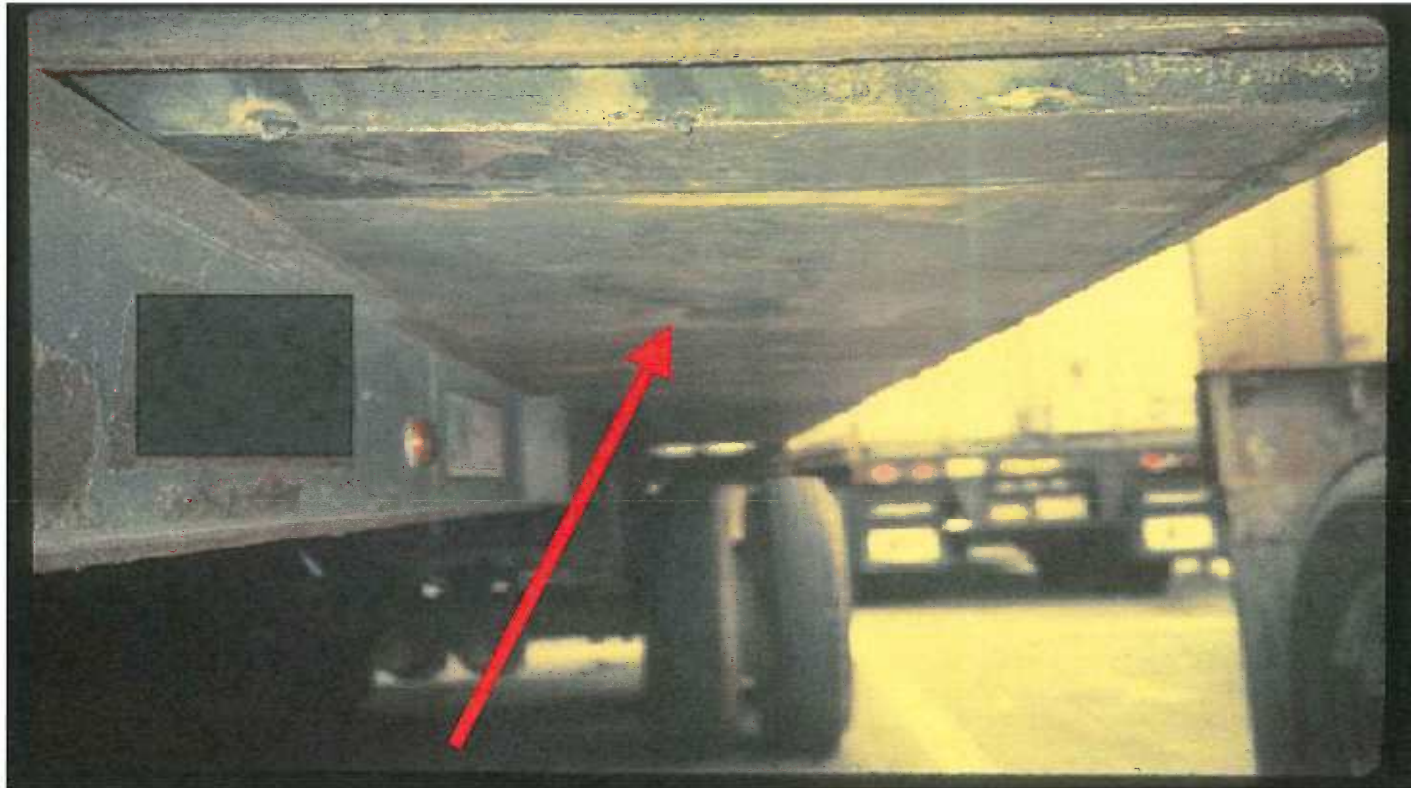


Supply Chain Security in a New Business Environment



# 7-Point Container Inspection...

## 1. Undercarriage:



7  
Point  
Under

Solid plate/ Support beams not visible.



Supply Chain Security in a New Business Environment



# 7-Point Container Inspection...

## 1. Undercarriage:



7  
Point  
Under

432 lbs. of cocaine!



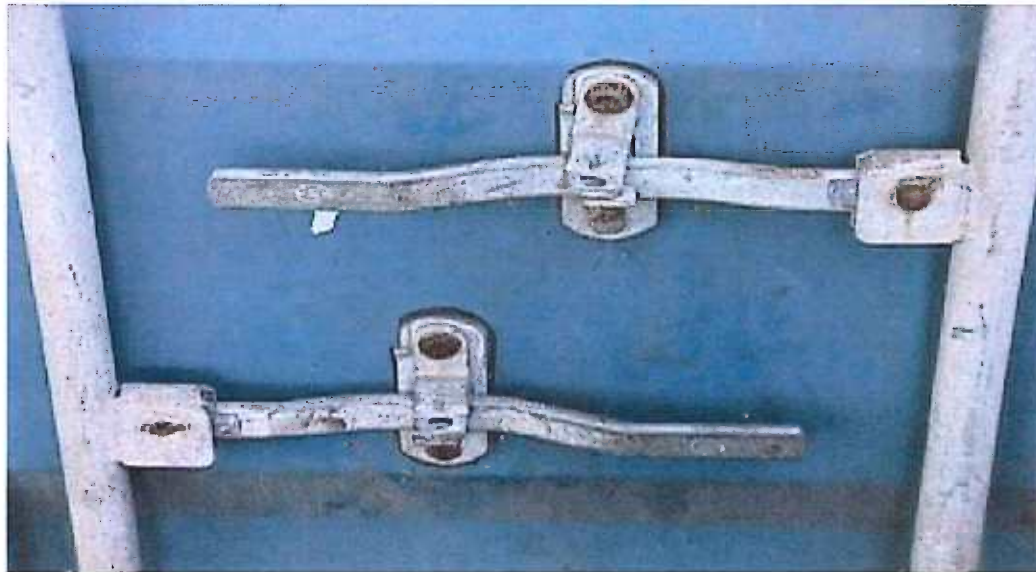
Supply Chain Security in a New Business Environment



# 7-Point Container Inspection...

## 2. Outside/Inside Doors:

- **Secure and reliable locking mechanisms**
- **Look for different color bonding material**
- **Loose Bolts**
- **Plates and repairs**



7  
Point  
Doors

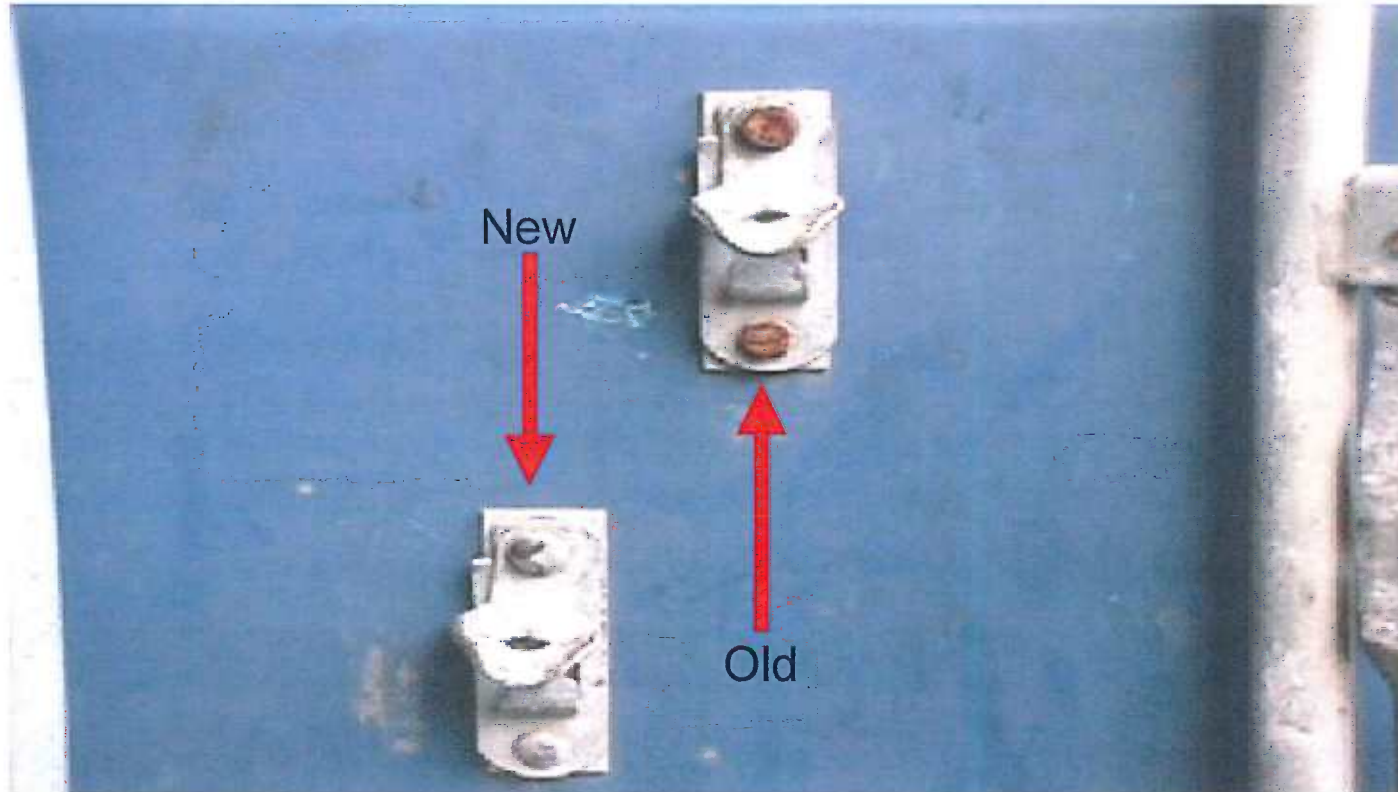


Supply Chain Security in a New Business Environment



# 7-Point Container Inspection...

## 2. Outside Doors:



7  
Point  
Doors

Rivet type & color/ New & old rivets together.

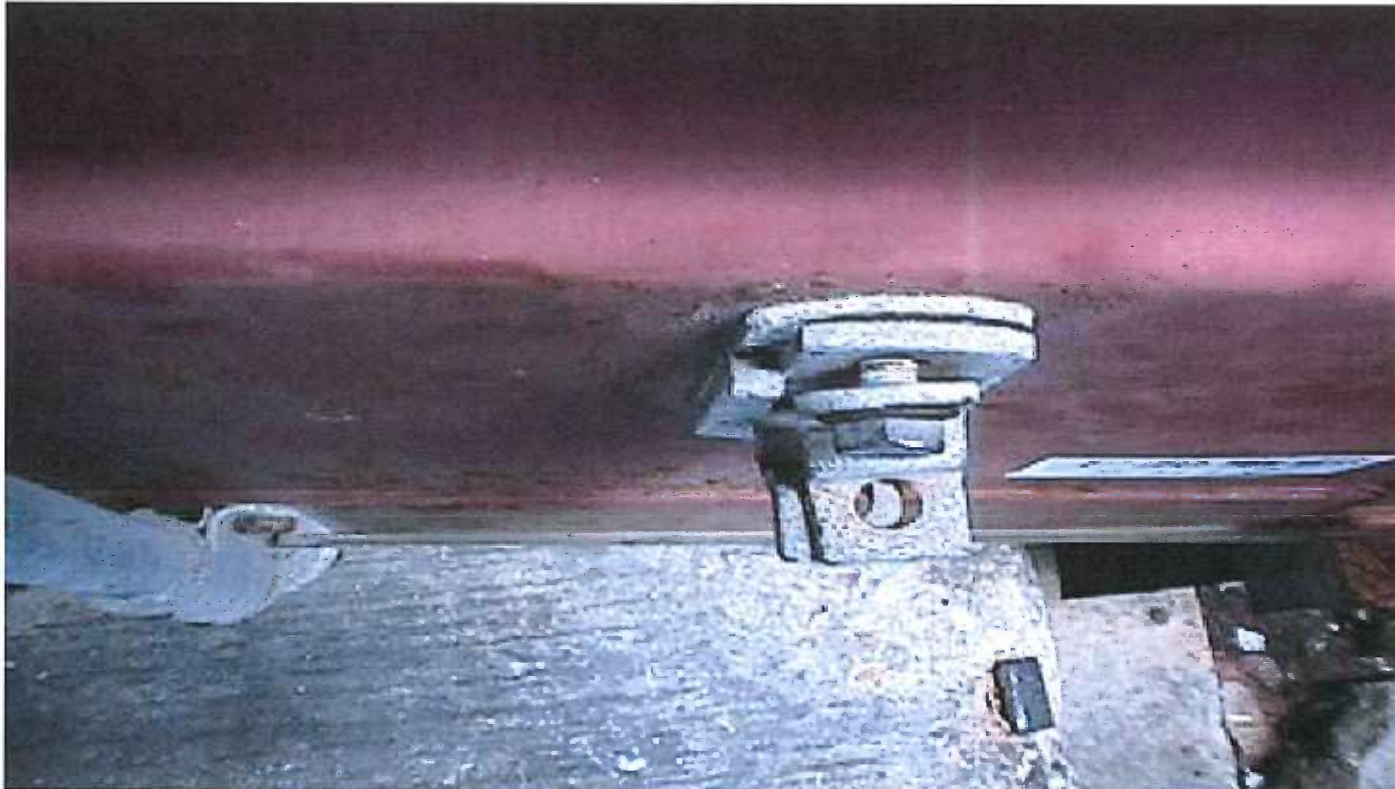


Supply Chain Security in a New Business Environment



# 7-Point Container Inspection...

## 2. Outside Doors:



7  
Point  
Doors

Detachable or loose bolts can allow access inside container.



Supply Chain Security in a New Business Environment





# 7-Point Container Inspection...

## 2. Inside Doors:



7  
Point  
Doors

Chemicals are used to make bolts look old and rusty.



Supply Chain Security in a New Business Environment



# 7-Point Container Inspection...

## 2. Inside Doors:



7  
Point  
Doors

Non-factory putty keeps bolts in place.



Supply Chain Security in a New Business Environment



# 7-Point Container Inspection...

## 2. Inside Doors:



7  
Point  
Doors

Solid plates should not cover standard container cavities.



Supply Chain Security in a New Business Environment



# 7-Point Container Inspection...

## 2. Inside Doors:



7  
Point  
Doors

Container cavities. Five container shipment/ 837 lbs. of cocaine.



Supply Chain Security in a New Business Environment